



Westfälische
Wilhelms-Universität
Münster

Small Animal PET with MWPC

small animal positron emission tomography
with multi-wire proportional chambers

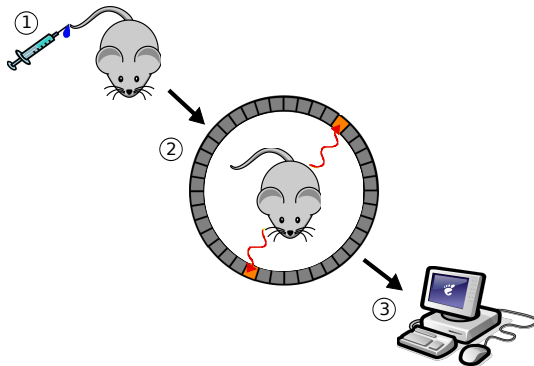


outline

1. the principle of PET
2. simulations regarding sensitivities
3. γ -to- e^- converter manufacture and test device

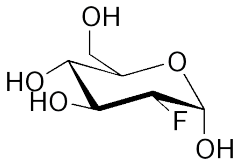
principle of PET

1. injection of radio-pharmaceutical
2. detection of decays
3. reconstruction with algorithms

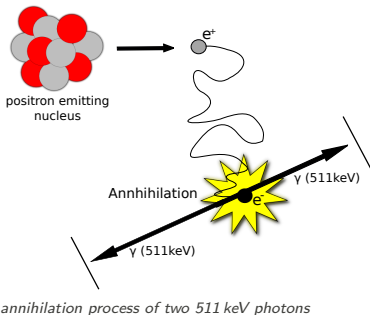


annihilation

radio-pharmaceutical:
e.g. glucose marked with F-18



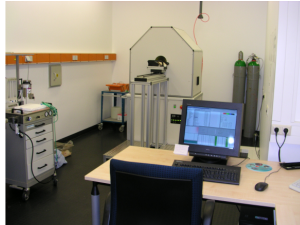
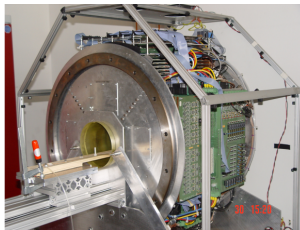
⇒ F-18 undergoes
 β^+ -decay:



PET-detectors scintillator based

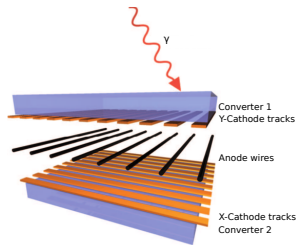


MWPC based

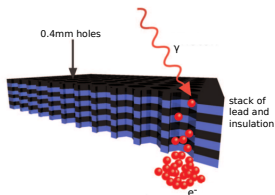


MWPC based

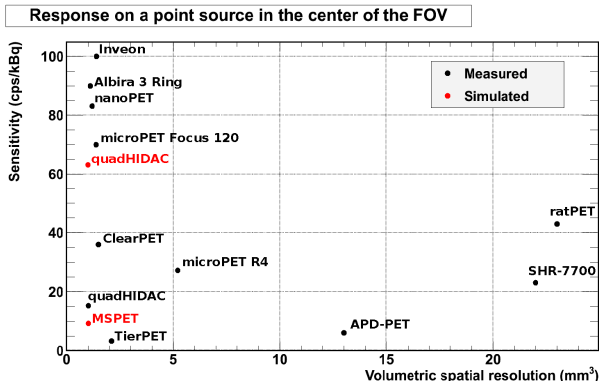
top: MWPC between two converters



bottom: close-up of converter: conversion of photons leads to avalanche due to electric field



sensitivity vs spatial resolution



- ▶ popular field of research
- ▶ quadHIDAC in the range of minimal resolutions
- ▶ quadHIDAC's perspective is promising due to high potential regarding sensitivity

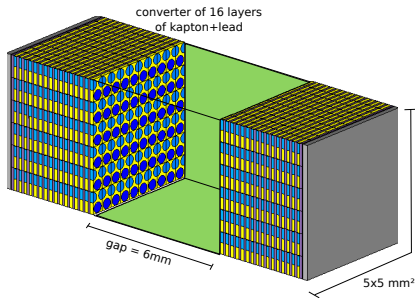
Geant4

Geant4: *"toolkit for the simulation of the passage of particles through matter"*

simulation:

quadHIDAC geometry
had been implemented

- ▶ 2 detector blocks
- ▶ 8 modules per block
- ▶ 2 converters à 16 layers per module
- ▶ centered point source

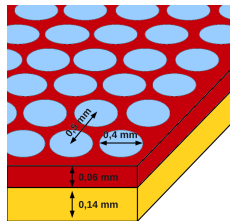


5x5 mm² cut of the converter as implemented in Geant4

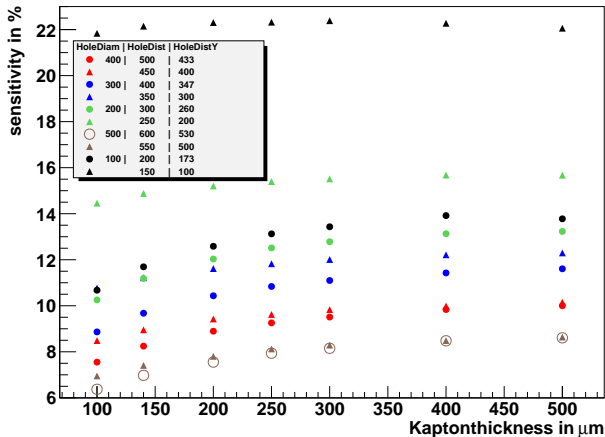
variable parameters

To find a promising converter setup, the following parameters can be taken into account:

- ▶ diameter of holes
- ▶ horizontal/diagonal distance of holes
- ▶ layer thickness of lead
- ▶ layer thickness of kapton
- ▶ number of layer



results of Geant4 simulations



▶ plateau for
> 300 μm

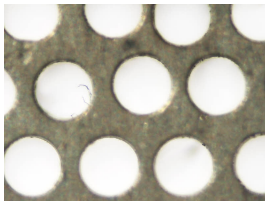
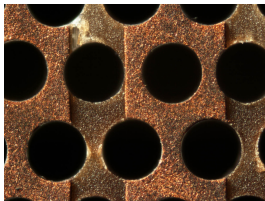
▶ smaller pitches
are superior at
equal diameters

▶ small diameters
promise high
sensitivity

building a converter

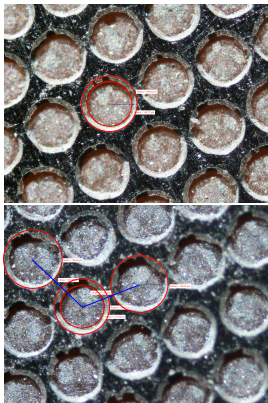
To be considered...

- ▶ ...material
- ▶ ...geometry
- ▶ ...fabrication
- ▶ ...alignment
- ▶ ...voltage supply



right: *converter of present quadHIDAC module*

status quo I: etching



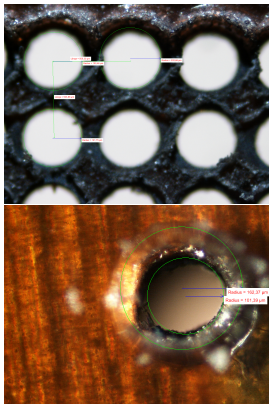
top: center of probe
bottom: edge of probe

lead etching at Fraunhofer IPM Freiburg

- ▶ inner radius: $\sim 150 \mu\text{m}$
- ▶ outer radius: $\sim 185\text{-}195 \mu\text{m}$
- ▶ horizontal pitch: $\sim 410 \mu\text{m}$
- ▶ diagonal pitch: $\sim 460 \mu\text{m}$

\Rightarrow future probe parameters:
radius = $150 \mu\text{m}$
pitch = $500 \mu\text{m}$

status quo II: laser technique

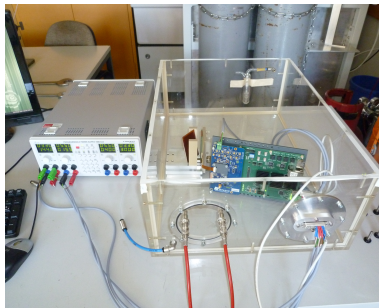
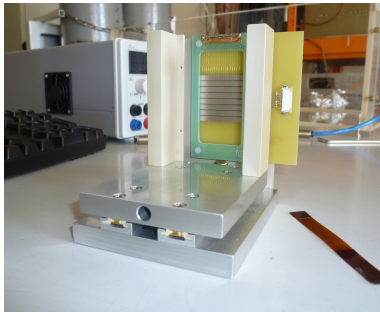


laser probes from rofin laser techniques

- ▶ **top:** double layer probe
 - ▶ UV-laser
 - ▶ radius $\sim 190\text{-}200\ \mu\text{m}$
 - ▶ pitch $\sim 500\text{-}510\ \mu\text{m}$
 - ▶ kapton has melted
- ▶ **bottom:** multi layer probe
 - ▶ inner radius $\sim 100\ \mu\text{m}$
 - ▶ outer radius $\sim 160\ \mu\text{m}$
 - ▶ sparks very likely

converter testing

In order to evaluate the prototype converters, a test device has been constructed.





summary and outlook

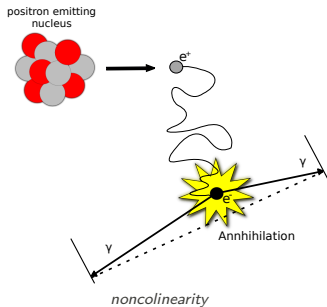
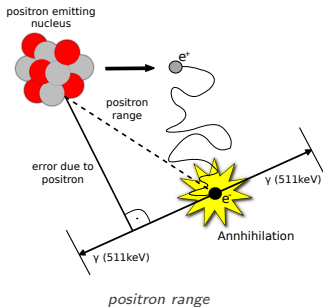
- ▶ Geant4 simulations give promising results regarding sensitivities
- ▶ Garfield simulations will be run to complete understanding of sensitivity behavior
- ▶ prototype converters can soon be produced
- ▶ to adjust the test device a test converter has been drilled
- ▶ the test device will be launched within the upcoming weeks



references

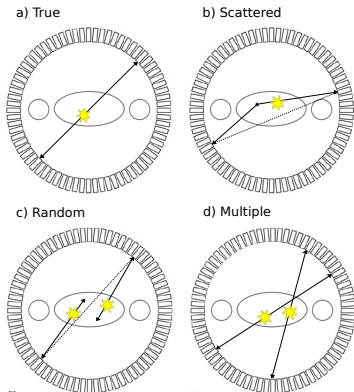
- ▶ H. Gottschlag. Small Animal Positron Emission Tomography with Multi-Wire Proportional Counters. Dissertation, Institut fuer Kernphysik, Uni Muenster, 2010.
- ▶ A. Jeavons et al. A 3D HIDAC-PET Camera with Sub-millimetre Resolution for Imaging Small Animals. IEEE Trans. Nucl. Sci. 46 3.
- ▶ A. Jeavons. Radiographic detector with perforated cathode, 1995. US Patent 5,434,468.
- ▶ A. Jeavons. Imaging system using a high-density avalanche chamber converter, 2002. US Patent 6,404,114.
- ▶ M.E. Phelps. PET: Physics, Instrumentation, and Scanners. Springer, 2006.
- ▶ K.P. Schaefer et al. Performance Evaluation of the 32-module quadHIDAC Small-Animal PET Scanner. J. Nucl. Med. 46 6 (2005) 996.
- ▶ D. Vernekohl. Measurements with a Multi-Wire Proportional Chamber for Small Animal Positron Emission Tomography. Diplomarbeit, Institut fuer Kernphysik, Uni Muenster, 2010.

appendix I: positron range and noncolinearity



errors when determining the position of the β -decay
 \Rightarrow limit for spatial resolution (~ 1 mm)

appendix II: types of events



there are four types of events in a PET-detector:
a) true, b) scattered, c) random, d) multiple